

CMS

Calibration Management System

PlugIn Installation And User Guide

Rev 1.2

Table of Contents

1. Introduction	3
2. Getting Started	4
2.1. Demo Version	4
2.2. Licensed Version	4
3. Installation	5
3.1 Hardware Requirements	5
3.2 Software Requirements	5
3.3 Installation Steps	5
4. Running The Plugin	12
4.1 Adding Instrument to CMS Website Using Plugin	12
4.2 Editing Instrument Details	18
4.3 Adding Instrument Image	19
4.4 Adding Instrument Certificate	20
4.5 Help	21
4.6 Activation	22
5. Support	23

1. Introduction

Calibration Management System (CMS) is an online tool that helps an organization to achieve the objective of keeping instruments fit and audit ready by sending automated reminder emails for upcoming calibration. The system offers an easy to use graphical interface with the following features.

- To add/update devices, instruments and machines.
- To add/update users and user permissions.
- To generate/view reports and save in pdf format.

The tool also has a plugin which helps user to upload device/instrument details supported by NI MAX to CMS.

2. Getting Started

2.1. Demo Version

You can get started using the demo version of CMS by registering at

<https://cms.aravsystems.com/register.php?appname=CMS>

The demo version is valid only for 30 days from the date of registration and does not include user management, report management features and the instrument data access is restricted to single user.

2.2. Licensed Version

CMS is available on a monthly subscription basis. To get a quote for your requirements please visit <https://cms.aravsystems.com/cmscontact.php> after login. The licensed version includes user management feature and the user/instrument data can be viewed by multiple users depending on the privileges granted across the organization.

3. Installation

3.1 Hardware Requirements

- Processor Intel i3 and above or equivalent
- 4 GB RAM
- 100 MB free space on hard drive

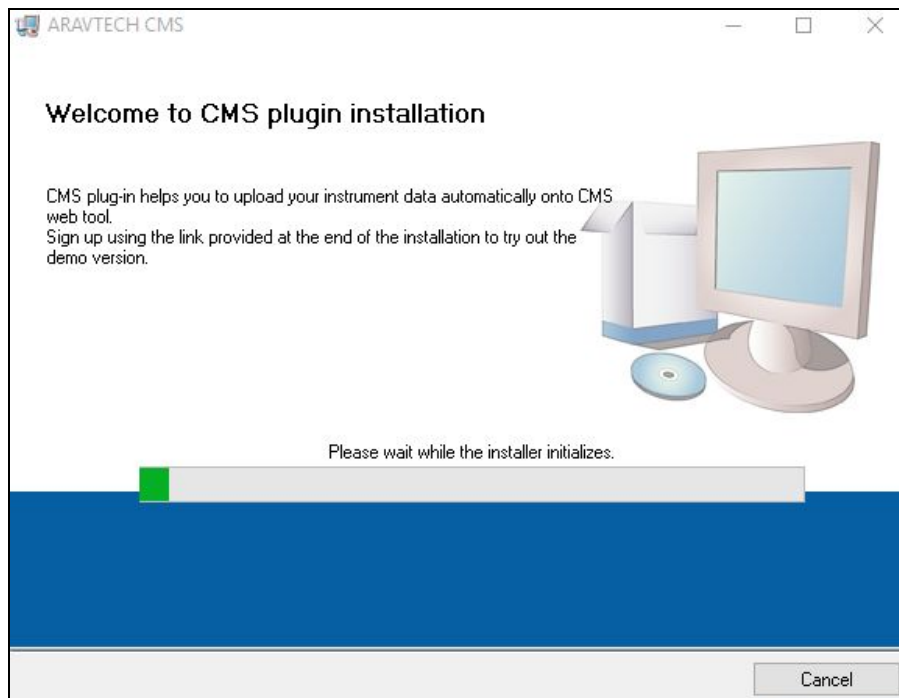
3.2 Software Requirements

- NI MAX 14.0 or later version.
- Windows 7 or later Operating System (32/64-bit)

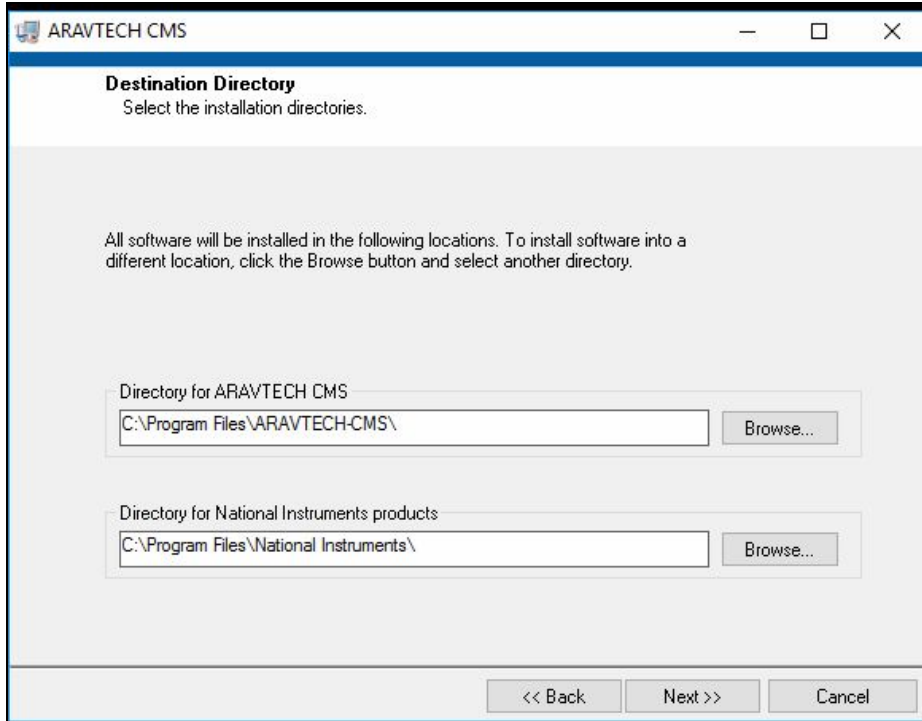
3.3 Installation Steps

After downloading the ARAVTECH CMS Installer from LabVIEW Tools Network/CMS Website follow the software installation procedure.

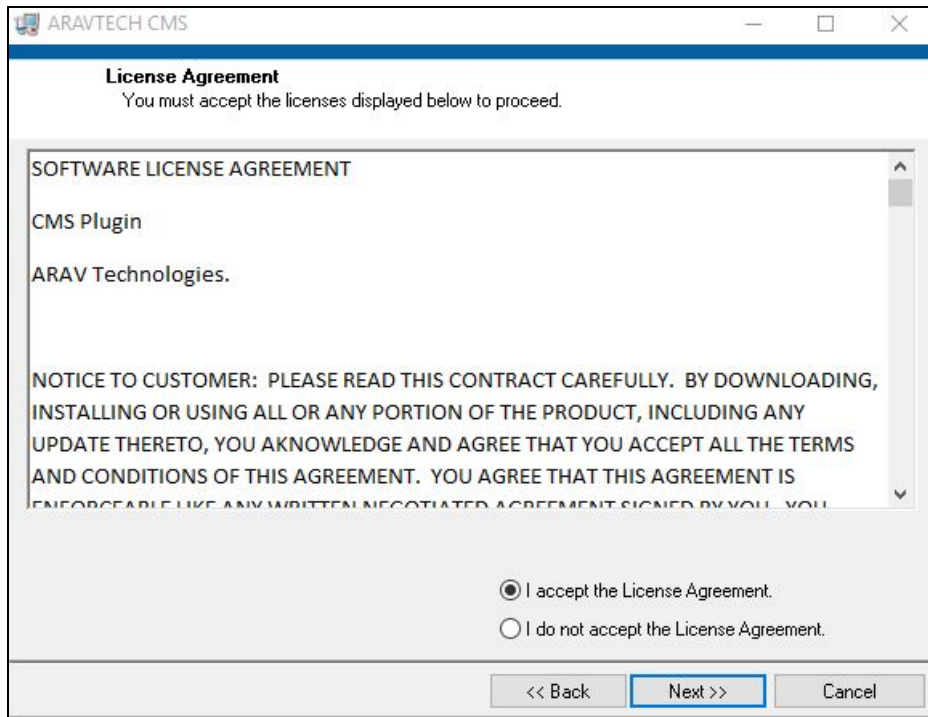
- Double click on the ARAVTECHCMS_1.2.exe and Installer wizard will start the installation.



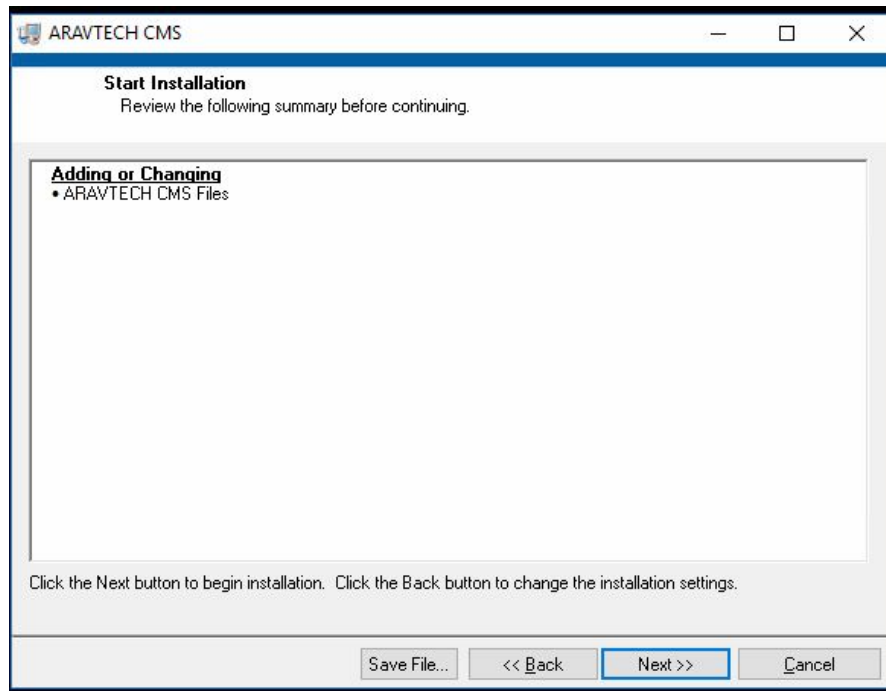
The installation directory will be shown. Leave the default path and click on **“Next”**



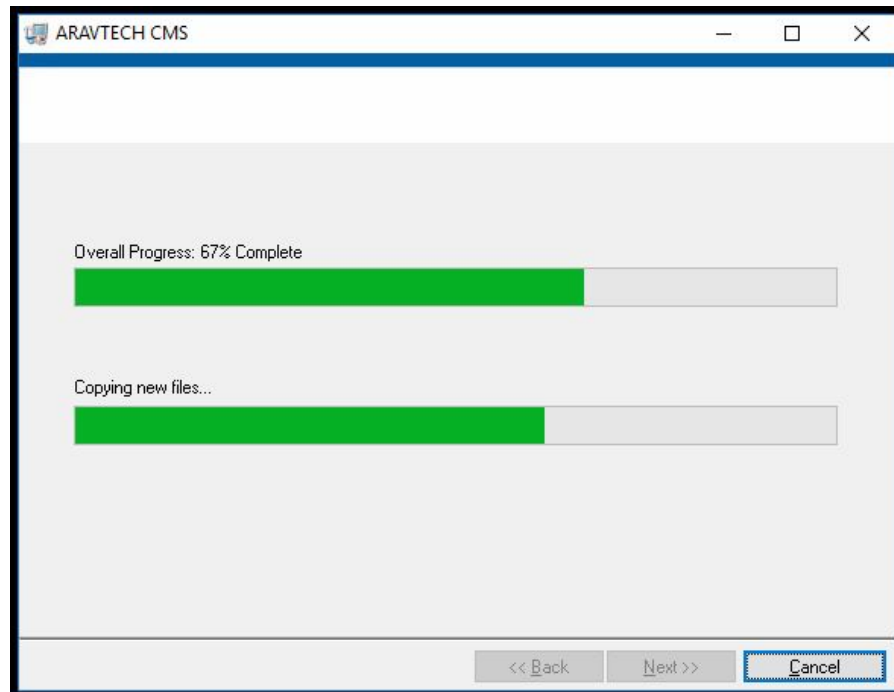
Accept the License Agreement and click on **“Next”**



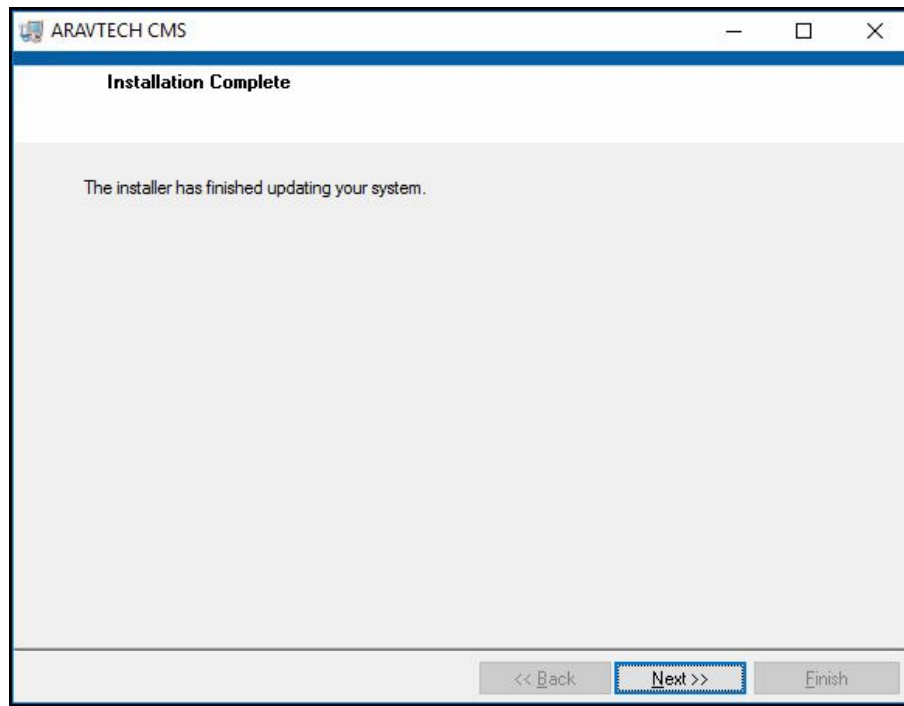
A summary of the changes being done on the system is shown. Click on "Next"



The progress of installation will be shown



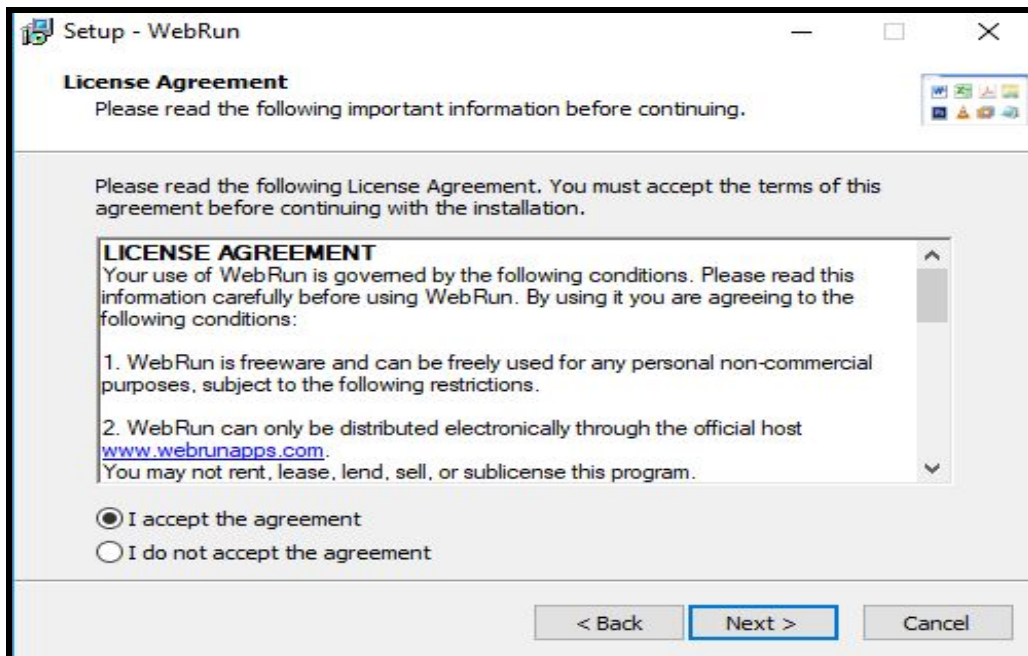
Click "Next" once the installation is complete.



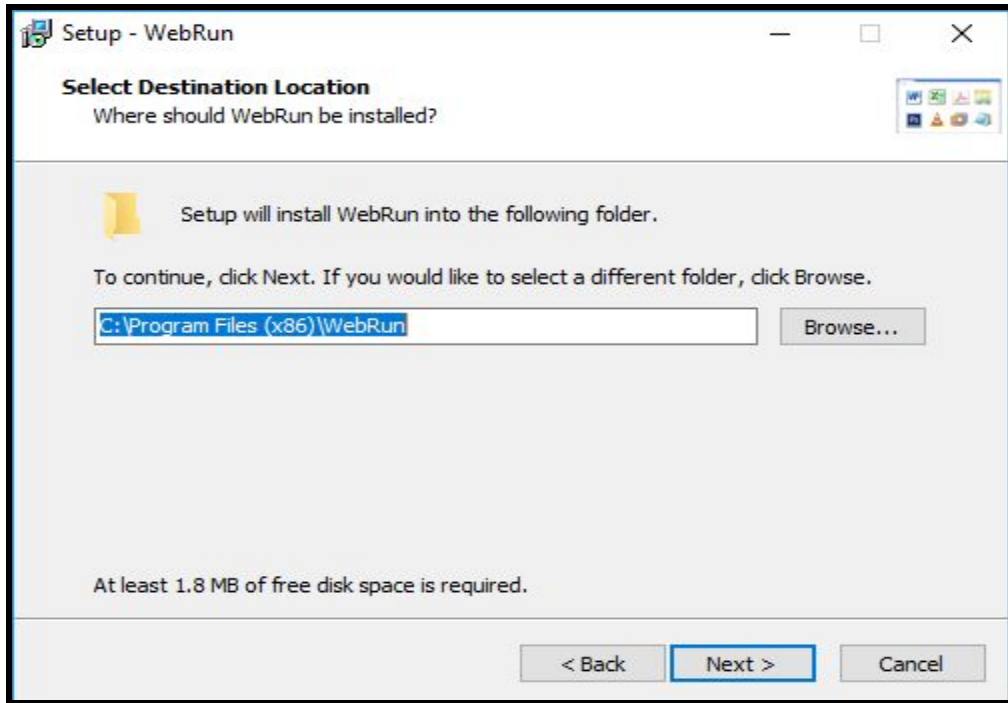
It will next start the installation of **WebRun** software.



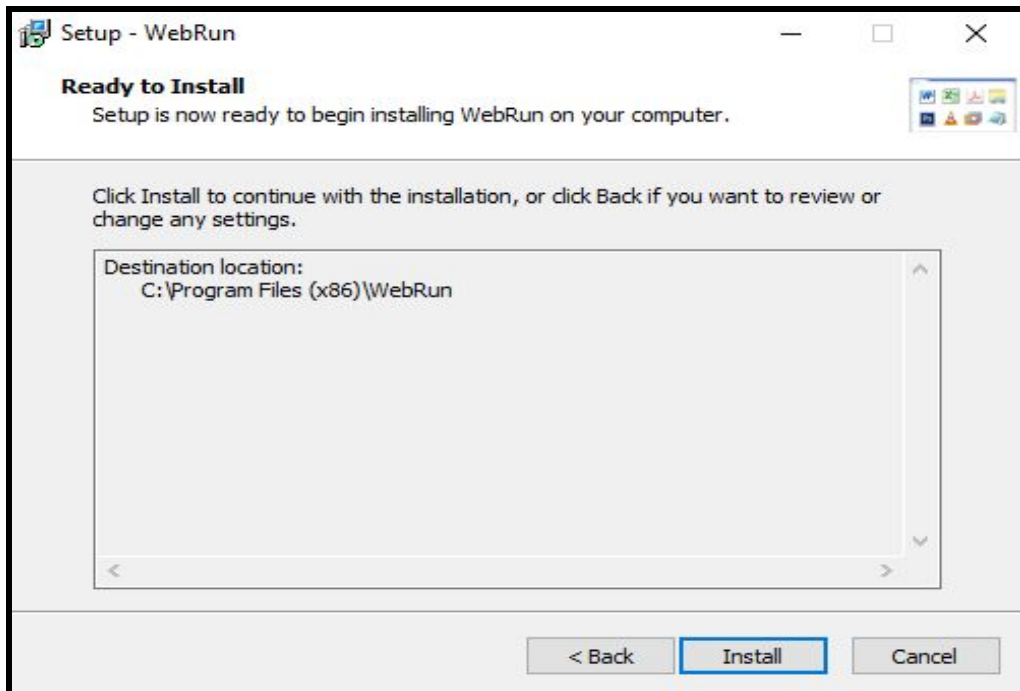
Accept the License agreement and click on “**Next**” to proceed further.



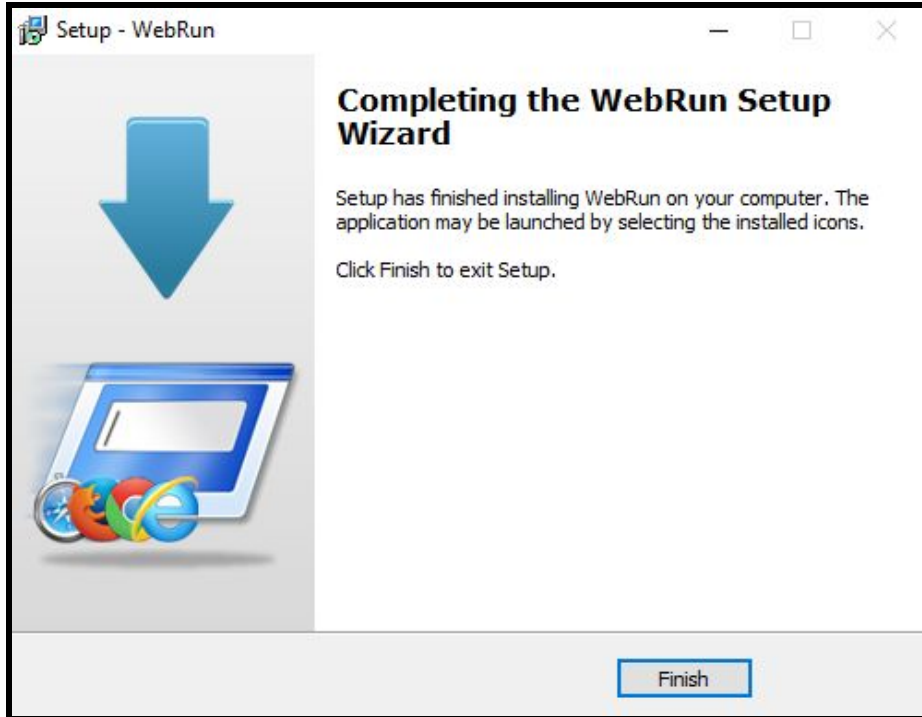
The installation directory will be shown. Leave the default path and click on “**Next**”



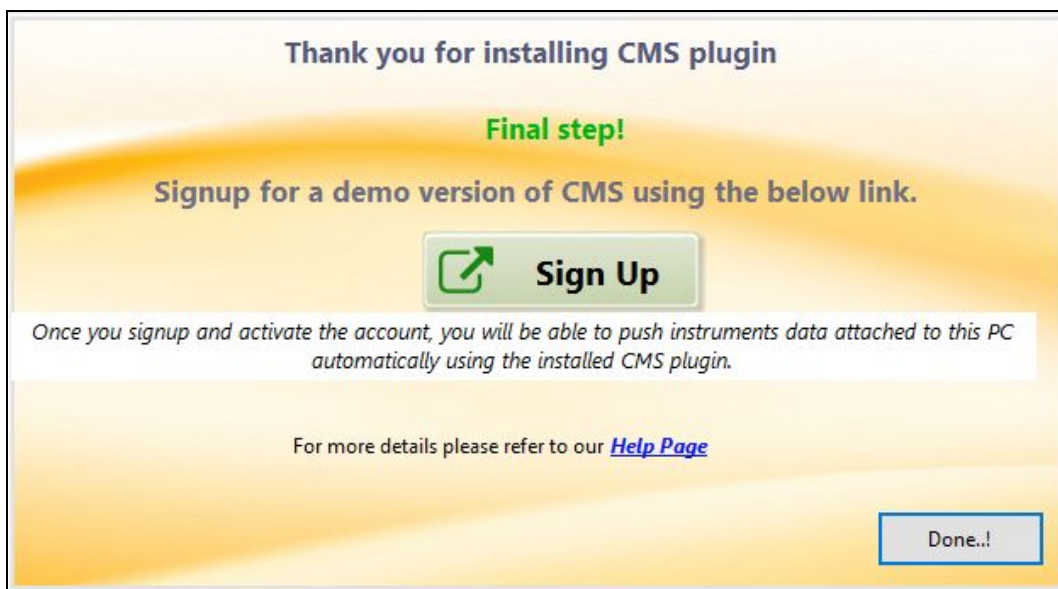
A summary of the changes being done on the system is shown. Click on “Install”



Click on “Finish” once the installation is complete.

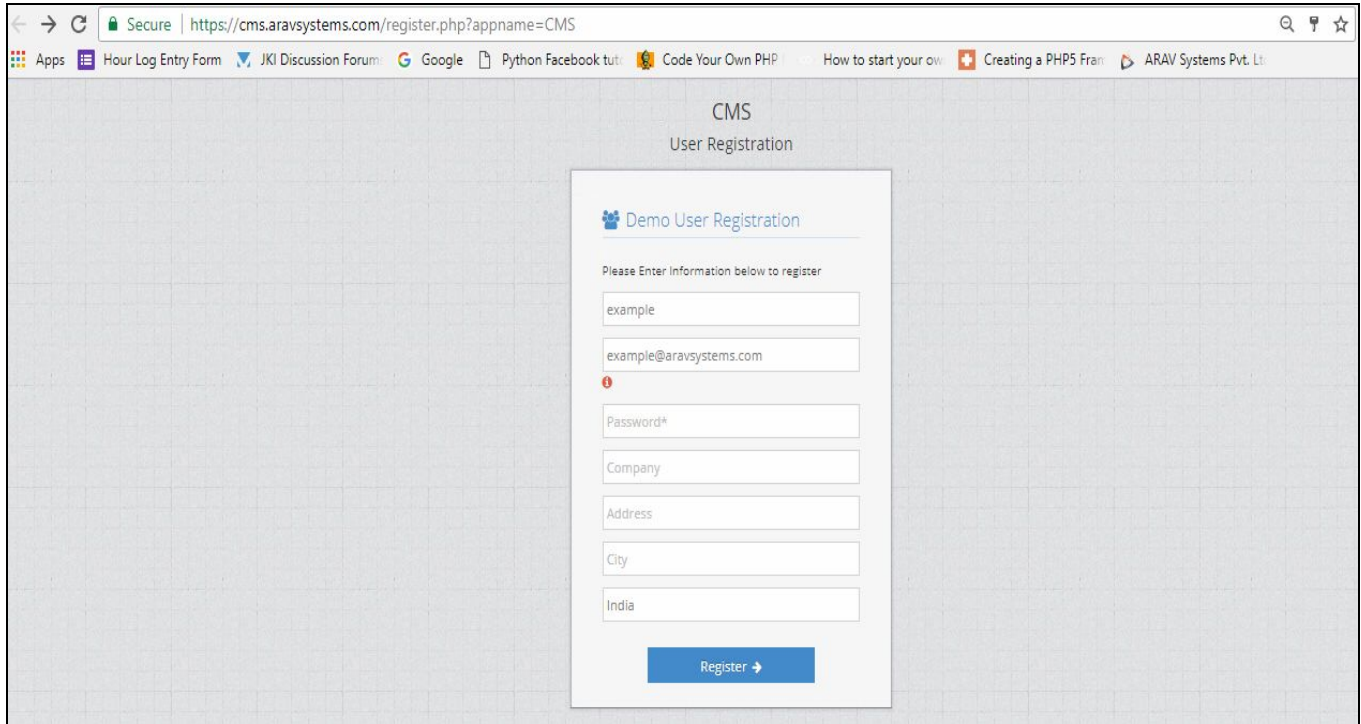


A thank you screen will be shown with link to Sign up and CMS Helps page. Click on the Sign up button to register for demo version.



Sign up page will open up in the default browser. Update your details and click on

“Register”. The email id mentioned here will be your username to login to CMS.



The screenshot shows a web browser window with the URL <https://cms.aravsystems.com/register.php?appname=CMS>. The page title is "CMS User Registration". The main content is a registration form titled "Demo User Registration". The form includes the following fields: "Please Enter Information below to register", "example" (username), "example@aravsystems.com" (email), "Password*" (password), "Company", "Address", "City", and "India" (country). A blue "Register" button is located at the bottom of the form.

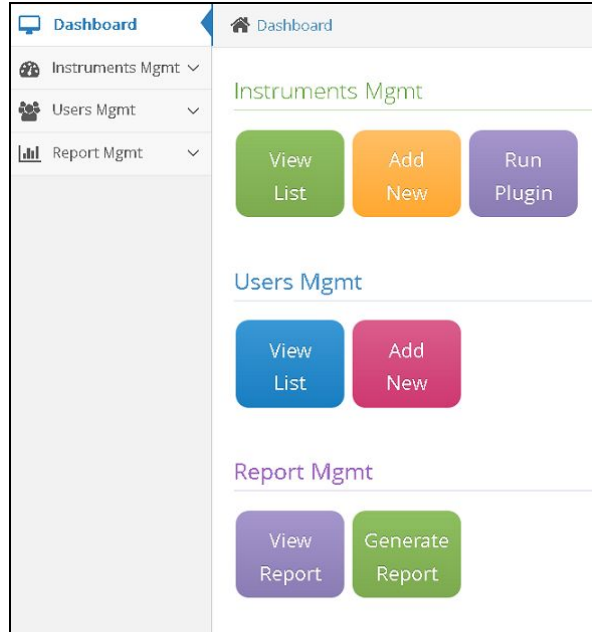
4. Running The Plugin

4.1 Adding Instrument to CMS Website Using Plugin

Use your computer's default web browser and login to CMS web tool using the given link <https://cms.aravsystems.com> with your registered email ID and password. You will see a dashboard with the below options

- Instruments Mgmt
 - View List
 - Add New
 - Run Plugin
- Report Mgmt*
 - View Report
 - Generate Report
- Users Mgmt *
 - View List
 - Add New

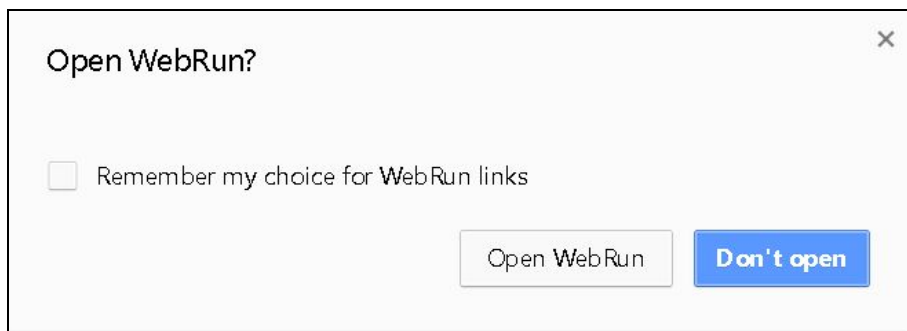
* Not available in demo version



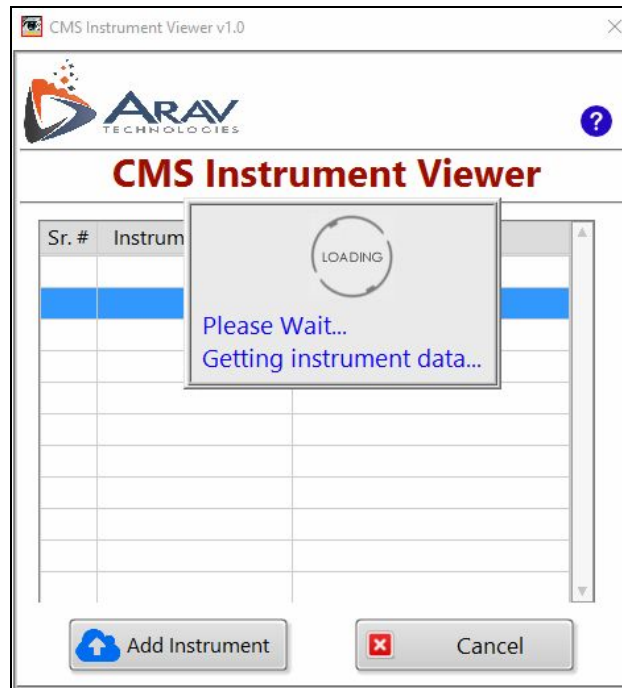
To add instrument details using the plugin, click on **Run Plugin** button.



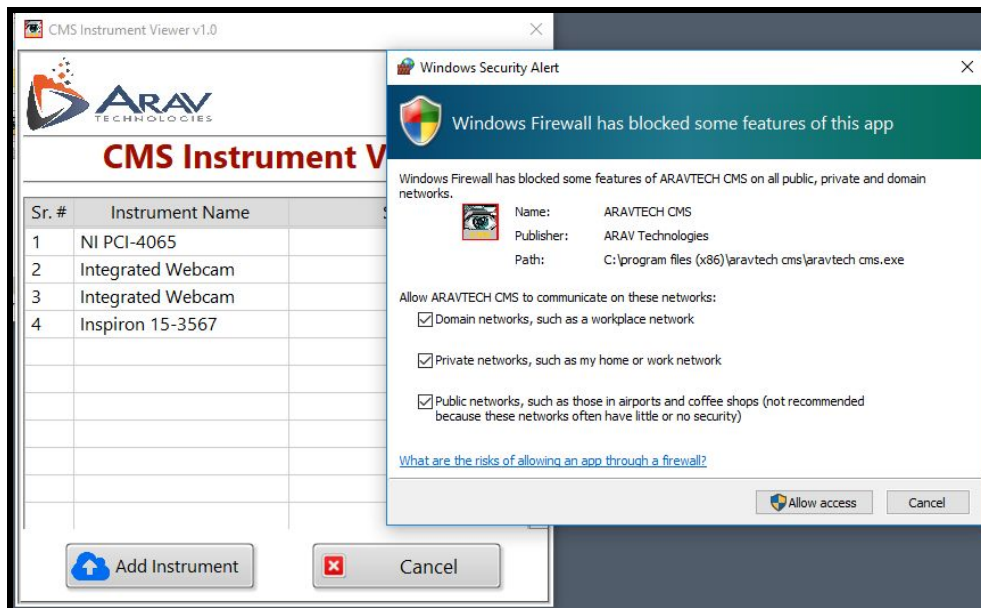
click on “*Open WebRun*” when the browser asks and also tick the checkbox beside “*Remember my choice for WebRun links*”.



The plugin will start loading the instruments attached to the computer.

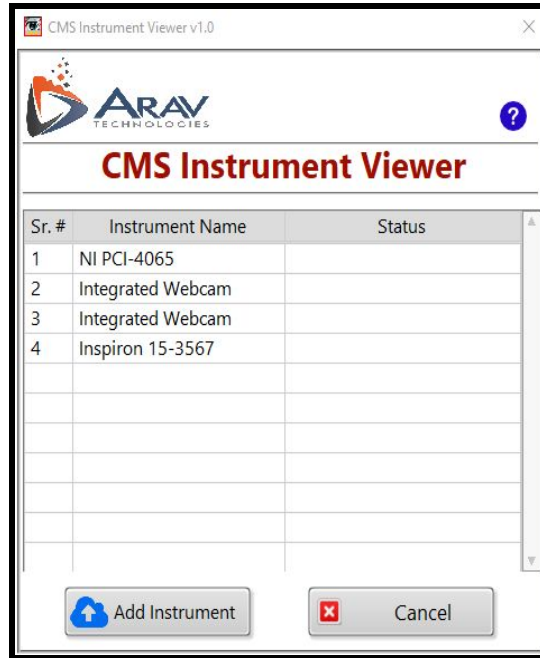


In case the windows firewall pops up, tick all the checkboxes to allows the plugin unrestricted access to communicate on the network.

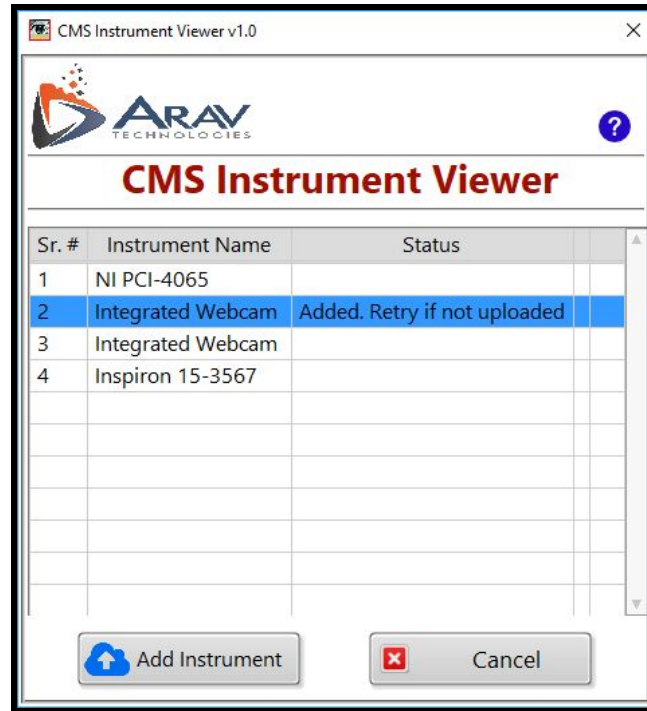


CMS Instrument Viewer will display all the hardware instruments in **Instrument Name**

column present in NI MAX software.



Select the Instrument Name you want to add to Calibration Management System and click on **Add Instrument** button, the status will be displayed in **Status** column and Calibration Management Webpage will open in the default browser on user PC (If you are not logged on to CMS website using default browser, you will be asked to login again)



Example

- To add the **Integrated Webcam** instruments details in CMS, first user has to select it and then click on **Add Instrument** button.
- The status will be shown as “**Added. Retry if not uploaded**”.
- The Calibration management software will open in the default web browser as shown below.

If the selected instrument is already present in the CMS database, then user will get a status notification as shown in the image below if he tries to add it again.

View Instruments List

+ Add New Instrument

NOTE : Click on the Status value to update the Status of the Instrument.

CIBE (Calibration Initiated Before Expiry)
CIAE (Calibration Initiated After Expiry)

Sort By
Instrument Name | ASC | Show 10 | Records per page | Submit

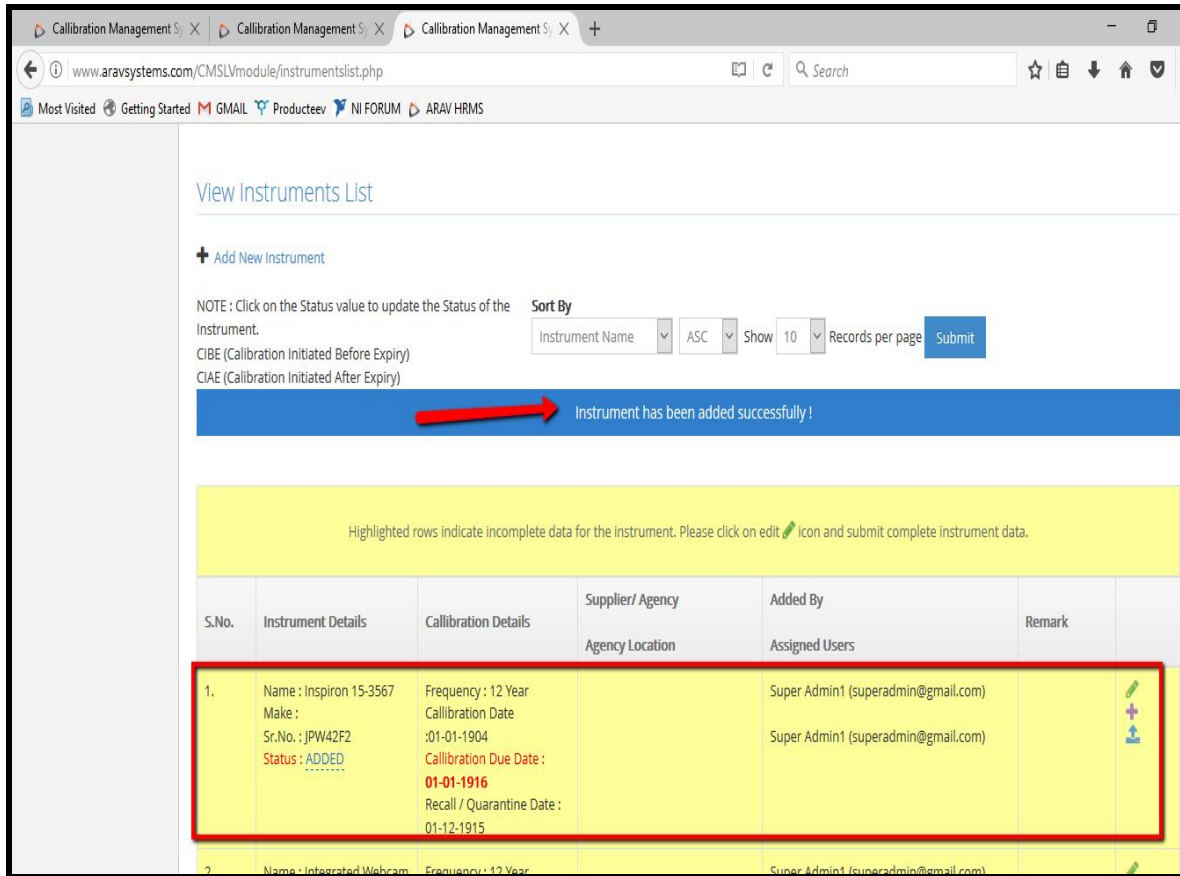
1 Serial Number already exists, Please check !

Highlighted rows indicate incomplete data for the instrument. Please click on edit icon and submit complete instrument data.

S.No.	Instrument Details	Calibration Details	Supplier/ Agency Agency Location	Added By Assigned Users	Remark
1.	Name : Integrated Webcam Make : Sr.No. : 999A1A25A5DC7A7D Status : ADDED	Frequency : 12 Year Calibration Date :01-01-1904 Calibration Due Date : 01-01-1916 Recall / Quarantine Date : 01-12-1915		Super Admin1 (superadmin@gmail.com) Super Admin1 (superadmin@gmail.com)	+ -
2.	Name : NI USB-9211A Make : INCOMPLETE Sr.No. : 0141A245 Department : INCOMPLETE	Frequency : 12 Year Calibration Date :01-01-1904 Calibration Due Date :	INCOMPLETE INCOMPLETE INCOMPLETE	Super Admin1 (superadmin@gmail.com) Super Admin1 (superadmin@gmail.com)	INCOMPLETE + -

To add new instrument (for eg.) **Inspiron 15-3567** in CMS, select it and click on **Add Instrument** button.

The status will be updated for successful entry of new instrument in database.



View Instruments List

+ Add New Instrument

NOTE : Click on the Status value to update the Status of the Instrument.

Sort By Instrument Name ASC Show 10 Records per page Submit

CIBE (Calibration Initiated Before Expiry)
CIAE (Calibration Initiated After Expiry)

Instrument has been added successfully!

Highlighted rows indicate incomplete data for the instrument. Please click on edit icon and submit complete instrument data.

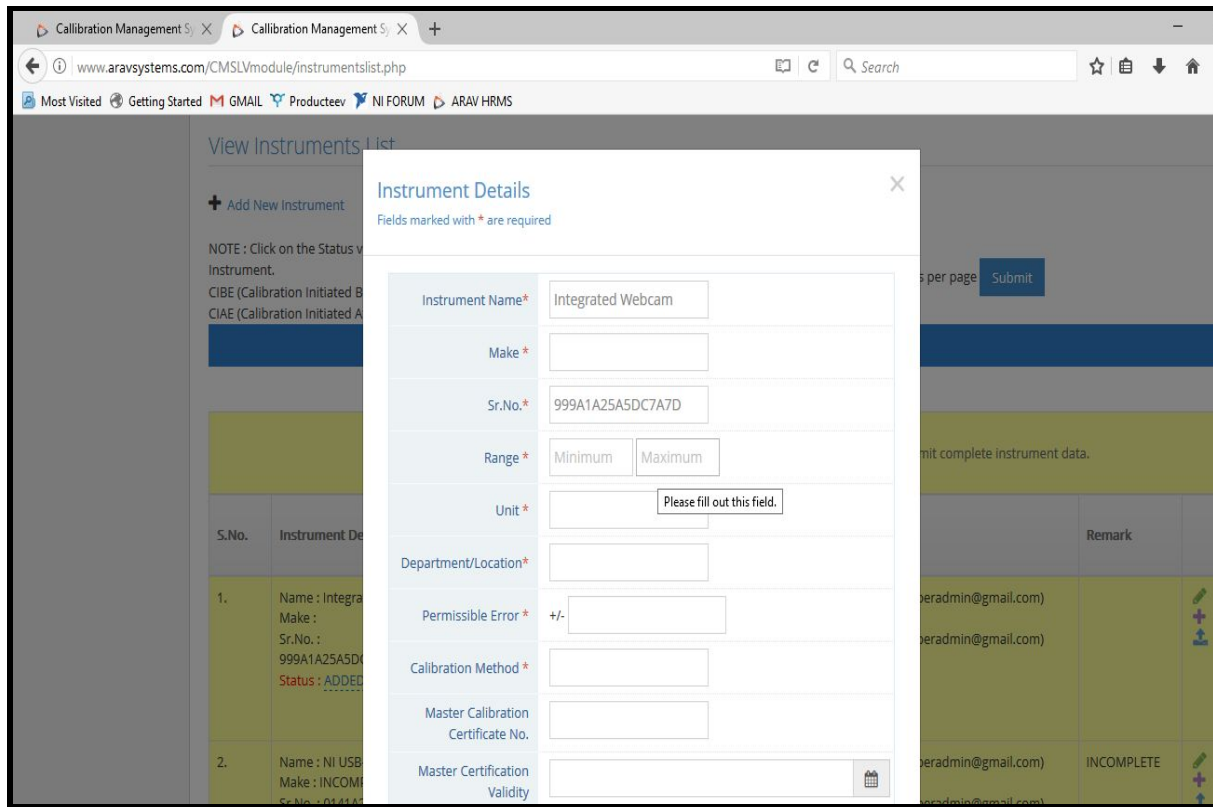
S.No.	Instrument Details	Calibration Details	Supplier/ Agency Agency Location	Added By Assigned Users	Remark
1.	Name : Inspiron 15-3567 Make : Sr.No. : JPW42F2 Status : <u>ADDED</u>	Frequency : 12 Year Calibration Date : 01-01-1904 Calibration Due Date : 01-01-1916 Recall / Quarantine Date : 01-12-1915		Super Admin1 (superadmin@gmail.com) Super Admin1 (superadmin@gmail.com)	
2.	Name : Integrated Webcam	Frequency : 12 Year		Super Admin1 (superadmin@gmail.com)	

4.2 Editing Instrument Details

To add the calibration details for the uploaded instrument in CMS, click on on the edit option beside the instrument



A form will open to edit the instrument details as shown in below image.



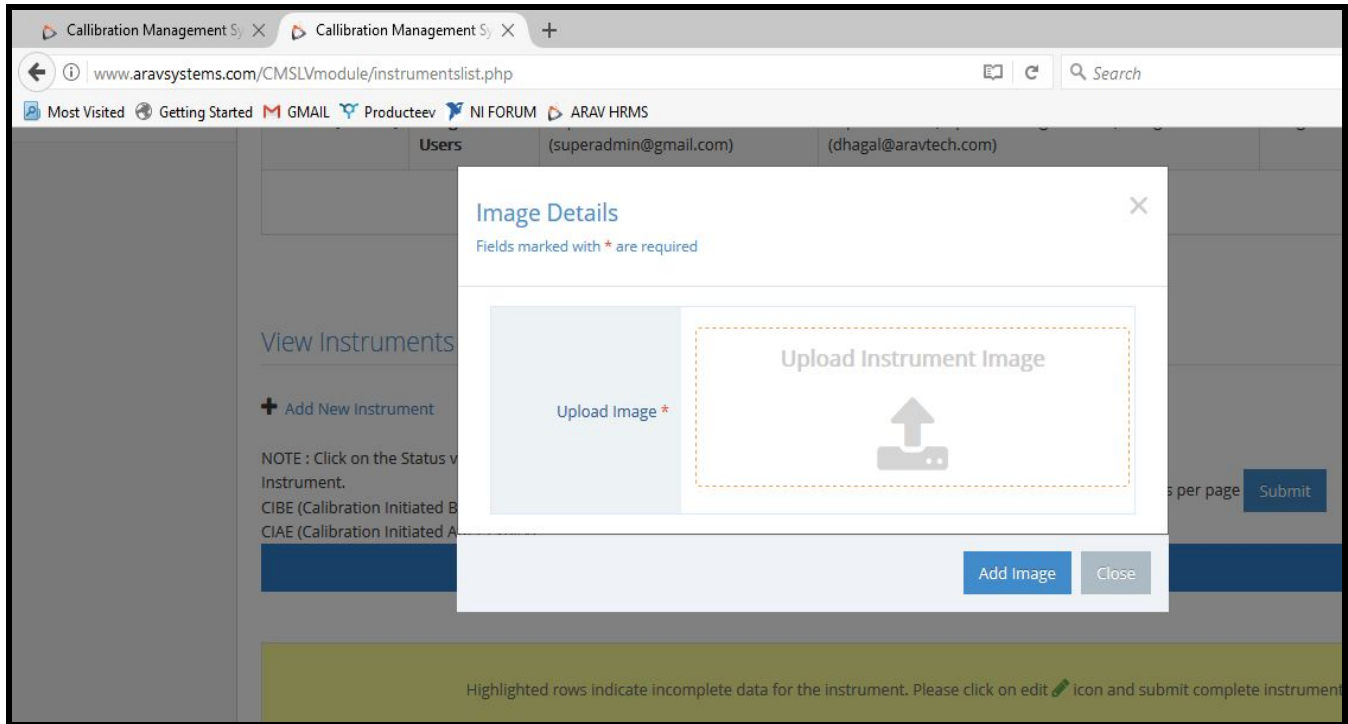
Update the details and save the data using “Edit Instrument” button at the end of the form.

4.3 Adding Instrument Image

To add the instrument image, click on **Add Instrument Image** button as shown below.



A pop up will appear and the user can upload an image for the instrument.

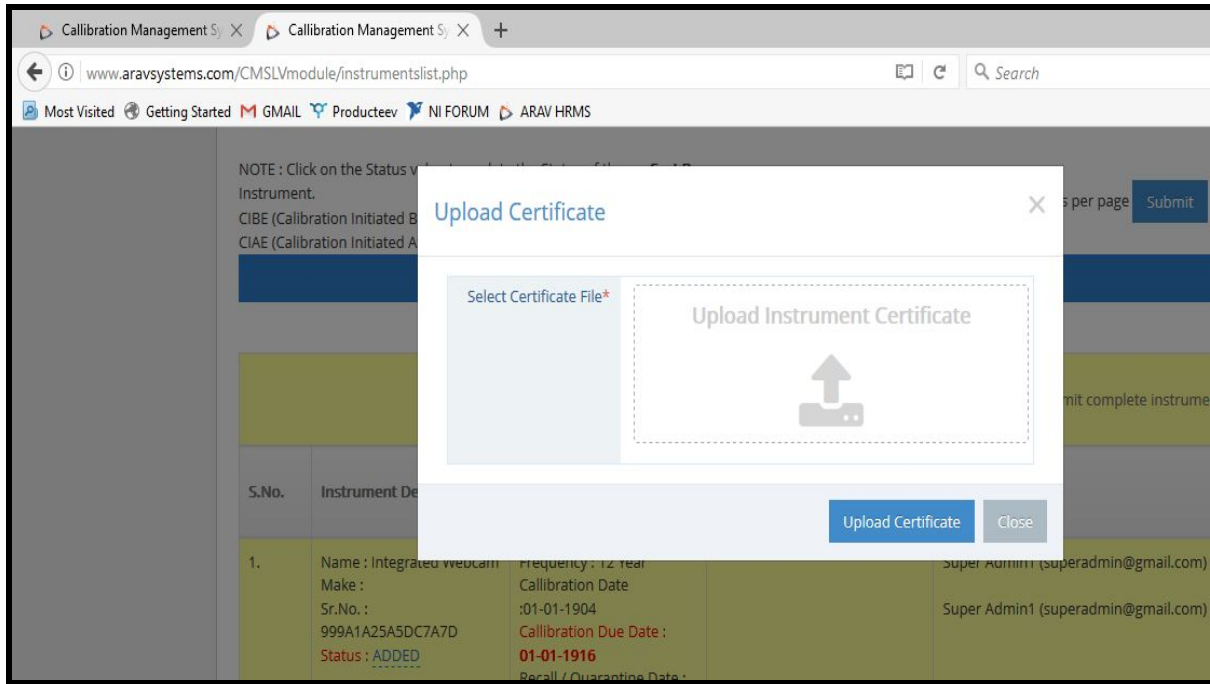


4.4 Adding Instrument Certificate

To add the instrument certificate, click on **Add Instrument Certificate** button as shown below.

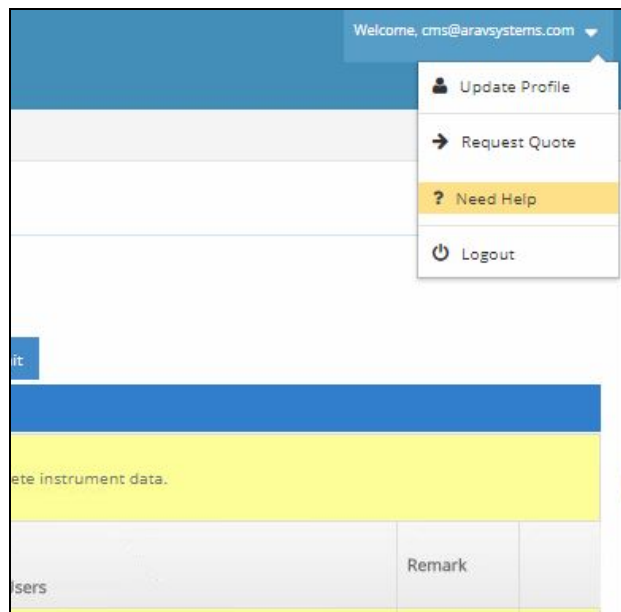


A pop up will appear asking user to upload the instrument certificate



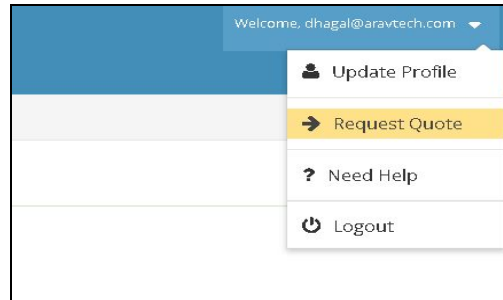
4.5 Help

To access CMS help page, click "Need Help" on the menu as shown below



4.6 Activation

Get a quote for the tool based on your requirement. To request a quote click on “Request Quote” from the menu as shown below.



Fill up the form and click on “Request Quotation”. ARAV Team will get in touch with you with the requested quotation. We will do the setup of the tool based on your requirement and activate once payment is received.

Dear Dhagal,
To request a quotation for the license, please fill the below details and click "Request Quotation"

Dhagal

dhagal@aravtech.com

Contact No.

ARAV

Society

City

India

No. Of Users*

No. Of Instruments*

I would like to purchase license for CMS tool. All the information provided above is valid.

[Request Quotation](#)

5. Support

For support, please email ARAV Technologies at cms@aravsystems.com or info@aravtech.com

You can also reach us at the below mentioned number from 10:00 AM to 06:00 PM (IST) for any query or issues.

Contact details (Office) - +91- 8806002266 (India)